

Switching VisionWare to Use EDT

From the VisionWare main menu, go to the Patients drop-down menu and click on “Practice Control”.

Practice File Maintenance

File Help

Practice Name: DR. JOHN SMITH

Street: 151 WEBER ST. S.

City and Prov: WATERLOO, ON

Postal Code: N2J 2A9

Telephone: 519-742-9708

Interest on Overdue Accounts: 0.00

Interest Period/Statement Cycle (Days): 30

Redirect Ins Back to Patient (Y/N): Y

Scheduling Time Units: 0

Round Up Rx Pricing (Y/N):

PMC Communication

- Diskette
- EDT

Printers Connected

- Dot Matrix
- Laser

Patient Label Size

- 1 inch
- 1.5 inch

Name & Address on Statements

- No Name
- Practice Name
- Doctor Name

Calculate Rx Package Discount

- Do Not adjust Rx pricing
- Adjust both lens and frame prices
- Adjust only lens prices
- Adjust only frame prices

Receipt Format

- Summary
- Detail

Adjust Frame Inventory

- At Rx Entry
- At Patient Billing

Accounting Interface

- ACCPAC Simply Accounting V3
- ACCPAC Simply Accounting V4
- Samco Realworld GL

Make sure the PMC Communication is set to **EDT** and click the SAVE button on the toolbar.

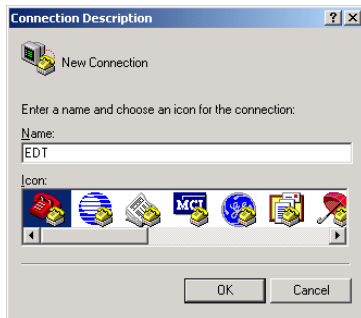
Once the PMC Communication is set to EDT, VisionWare will no longer create OHIP submissions or reconcile remittances by diskette. Instead, all OHIP files for all Doctors in the practice will be stored in the *C:\Vision\EDT* directory.

Creating the EDT Icon

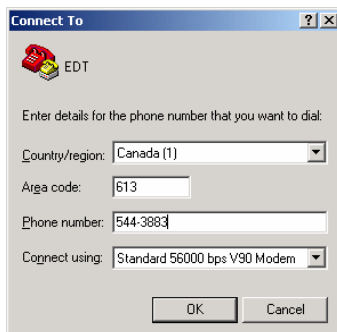
1. Open the Windows Start Menu and navigate to Programs -> Accessories -> Communications -> HyperTerminal.

(If you are prompted to make HyperTerminal your default program, checkmark “Do Not Ask Me Again” and choose ‘Yes’.

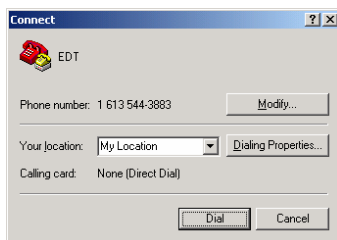
2. When HyperTerminal opens, a “Connection Description” window appears. Enter the name **EDT** and press OK.



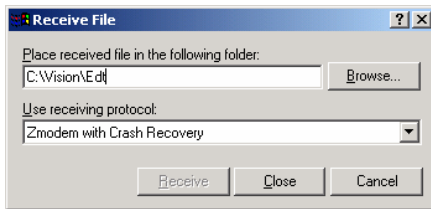
3. Enter the country code **Canada (1)**, the area code **613**, and the phone number **544-3883**. Select the correct modem beside “Connect Using” and press OK.



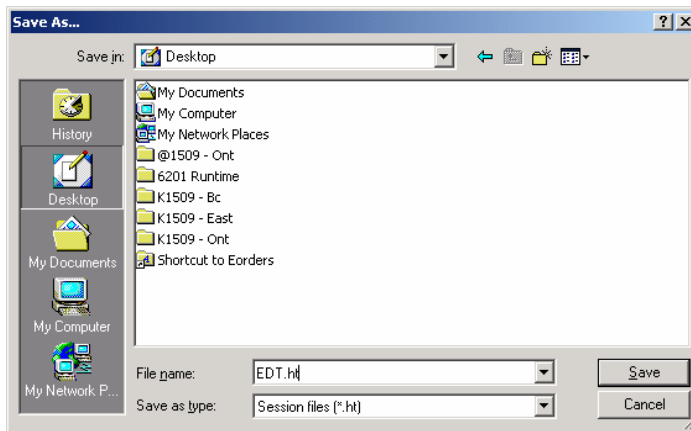
4. A “Connect” window will appear. Press Cancel to close this window.



- From the drop-down menus at the top, select *Transfer* and click on *Receive File*. For receiving folder, enter **C:\Vision\Edt** and Protocol should be set to “Zmodem with Crash Recovery”. Click the Close button.



- From the drop-down menus at the top, select *File* and click on *Save As*. Save the connection on the **Desktop** as the file name **EDT.HT** and click the Save button.



- Close the HyperTerminal program. The EDT icon should now appear on your Desktop.

